

# bakehouse studio hire

The Town Mill's dynamic new space to hire, the Bakehouse Attic, is the ideal space for **childrens activities, craft workshops** or as a **meeting room**.



Half day, full day and evening hire available. For more details email [info@townmill.org.uk](mailto:info@townmill.org.uk)

# get involved

To take part in an open exhibition or exhibit in our gallery, please join our mailing list.  
Email: [info@townmill.org.uk](mailto:info@townmill.org.uk)

# sponsor an exhibition

Would you like to sponsor an exhibition or an artist in return for PR/Marketing for your business?

Email: [info@townmill.org.uk](mailto:info@townmill.org.uk)



**THE TOWN MILL**  
LYME REGIS

Mill Lane Lyme Regis DT7 3PU  
t 01297 444042 e [info@townmill.org.uk](mailto:info@townmill.org.uk)

[www.townmill.org.uk](http://www.townmill.org.uk)

[f /TheTownMill](https://www.facebook.com/TheTownMill) [@thetownmill](https://www.instagram.com/thetownmill) [@TownMill1](https://twitter.com/TownMill1)

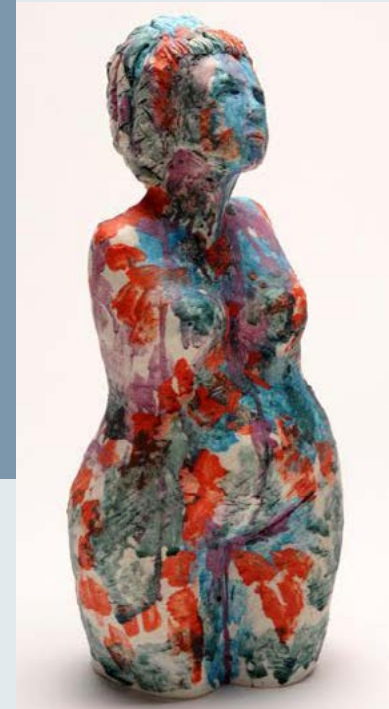
the creative heart of Lyme

Registered Charity Number 104 16 14

# Malthouse Gallery

Registered Charity Number 104 16 14

**2022** | programme  
of events

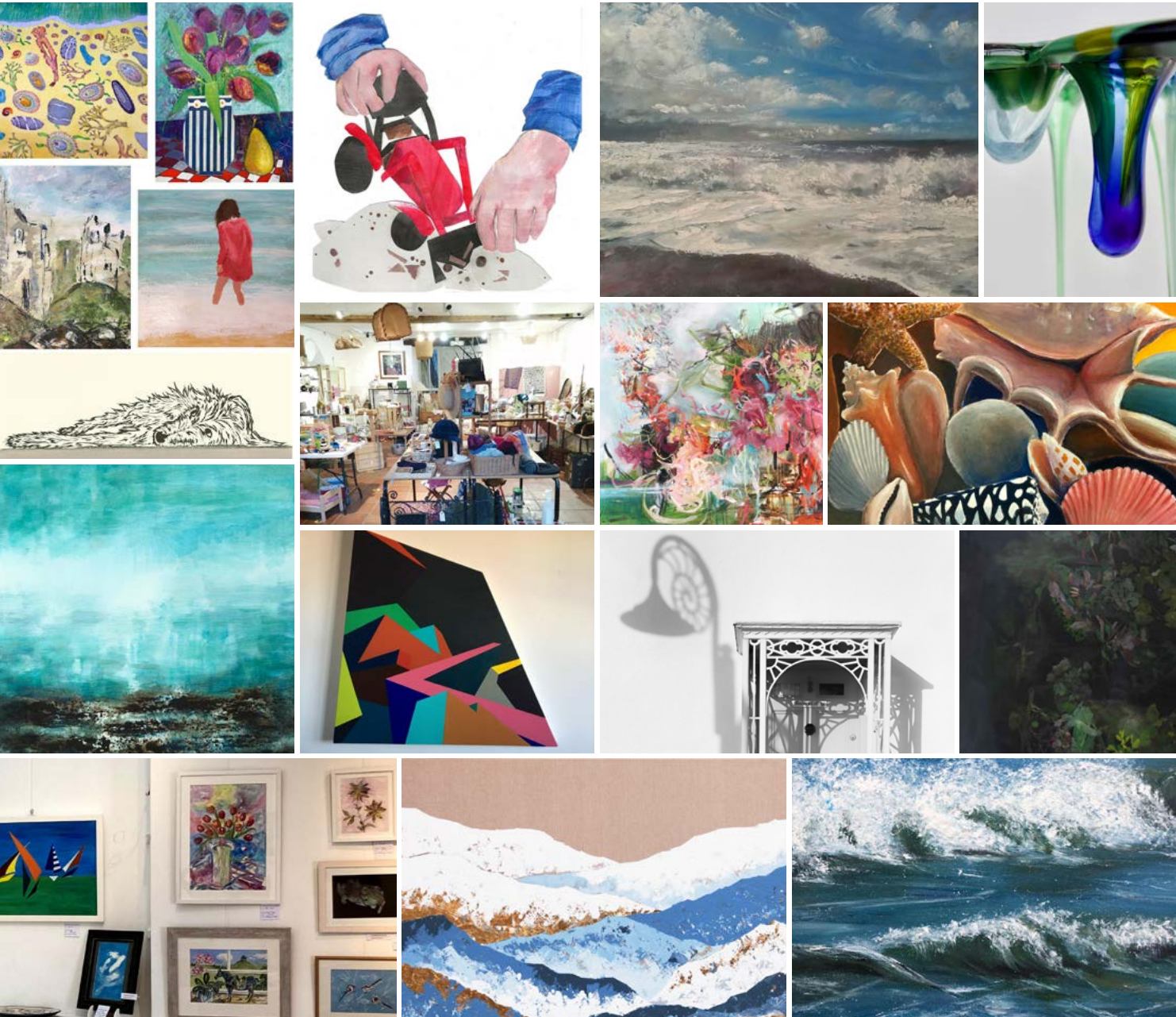


**THE TOWN MILL**  
LYME REGIS

# Malthouse Gallery

Registered Charity Number 104 16 14

The **Malthouse Gallery** is an impressive and interesting space with lofty beamed ceilings and high glazed doors that allow plenty of light. It is perfect for showcasing large artworks. Access is from The Town Mill area off Combe Street.



## march

19<sup>th</sup> - 20<sup>th</sup> mar  
26<sup>th</sup> mar - 7<sup>th</sup> apr

Natasha Hayball 'One TwoThree'  
Lisa Parkyn & Eilean Eland 'Echoes'

## april

8<sup>th</sup> - 21<sup>st</sup> apr  
23<sup>rd</sup> - 28<sup>th</sup> apr  
29<sup>th</sup> apr - 2<sup>nd</sup> may

Julie Oldfield 'Alchemical'  
Duncan Harris & Archie Stoke-Faiers  
Fossil Festival

## may

3<sup>rd</sup> - 5<sup>th</sup> may  
6<sup>th</sup> - 12<sup>th</sup> may  
  
13<sup>th</sup> - 19<sup>th</sup> may  
  
20<sup>th</sup> - 26<sup>th</sup> may  
27<sup>th</sup> may - 9<sup>th</sup> jun

Wood turning  
Bethany Ellen Walker  
'A Glimpse of Glimmers'  
Trudi Ochiltree - Art Class Members  
Exhibition 'Light and Colour'  
Andrew Haydon 'Moments'  
Lyme Regis Art Society

## june

10<sup>th</sup> - 16<sup>th</sup> jun  
19<sup>th</sup> - 23<sup>rd</sup> jun  
24<sup>th</sup> - 30<sup>th</sup> jun

Richard Corbett 'Seascape'  
'Five go to Lyme'  
Lin Cudlipp 'Ode to the sea'

## july

1<sup>st</sup> - 7<sup>th</sup> jul  
9<sup>th</sup> - 28<sup>th</sup> jul  
29<sup>th</sup> jul - 4<sup>th</sup> aug

Alison Shelton Brown 'Flotsam'  
'Colour Line & Thread 2022'  
Chris Goodman and Sue Lewin

## august

5<sup>th</sup> - 11<sup>th</sup> aug  
13<sup>th</sup> - 25<sup>th</sup> aug  
26<sup>th</sup> aug - 8<sup>th</sup> Sept

Chelsea Davine 'No line on the Horizon'  
Richard Kaye - Recent Works  
Julie Oldfield 'Transmutation'

## september

9<sup>th</sup> - 15<sup>th</sup> sept  
16<sup>th</sup> - 22<sup>nd</sup> sept  
23<sup>rd</sup> - 29<sup>th</sup> sept  
30<sup>th</sup> sept - 13<sup>th</sup> oct

Ruth Piper 'Emblems of Hope'  
Alison Webber  
Dorset Independent Photographers  
Zee Jones, Sue Barnes, Alison Todd  
'Amongst the Trees'

## october

14<sup>th</sup> - 20<sup>th</sup> oct  
21<sup>st</sup> oct - 3<sup>rd</sup> nov

'Harvest'  
Pete Hackett 'Untitled'

## november

4<sup>th</sup> - 10<sup>th</sup> nov  
11<sup>th</sup> - 17<sup>th</sup> nov  
18<sup>th</sup> - 24<sup>th</sup> nov  
26<sup>th</sup> - 8<sup>th</sup> dec

'Four Seasons'  
'ColourWorks'  
DD&B Interiors  
'Pop up Vintage'

## december

10<sup>th</sup> dec - 3<sup>rd</sup> jan

'Christmas at the Mill'